

INLGT02IRWF

2.1MP AI Vandal Proof Fixed Turret Camera w/IR,IN/OUT, 2.8mm

- High quality image with 2MP, 1/2.7" CMOS sensor
- True WDR (120 dB) to offer you the best image in the most demanding lighting conditions
- H.265+ & H.264 encoding
- Smart IR, Up to 30 m (98ft) IR distance
- Supports Micro SD Card, up to 256GB



Legend: Smarter, Stronger, Fully NDA Compliant

Unify your Security Solution

You asked, we listened. Tailored especially for you, Legend is our fully NDA compliant brand. It offers our latest technologies in a robust build with edge storage capacity. Legend by Inaxsys provides H.265+ compression and easy installation

Smart H.265+ & H.264

LEGEND smart encoding technology provides high-quality video with higher efficiency and also reduces the cost of storage space and transmission bandwidth by adopting an advanced algorithm of auto stream control.

Wide Dynamic Range

This camera offers vivid imaging in any scenario. Using industry-leading WDR technology, you'll be able to capture the subject in the most difficult lighting conditions.



*Design and specifications are subjects to change without notice.

Camera					
Image Sensor		1/2.8.0" CMOS, 2.0 megapixel			
Minimum Illumination		Colour: 0.001 lux (F1.6, AGC ON), 0 lux with IR			
Day/Night		IR-cut filter with auto switch (ICR)			
Electronic Speed Shutter		Auto/Manual, 1 ~ 1/100000s			
Pan/Tilt/Rotate		Pan: 3° ~ 360°	Tilt: 0° ~ 80°	Rotate: 0° ~ 360°	
WDR		120 dB			
S/N Ratio		More than 52 dB			
IR Illumination					
IR Range		Up to 30m/98ft			
Wavelength		850nm			
IR On & Off Control		Auto/Manual			
Lens					
Lens Type		Fixed			
Aperture		F1.6			
Focal Length		2.8mm			
Viewing Angle (H, V, D)		H : 106.7°	V : 57.1°	D : 115.7°	
DORI					
DORI Distance	Lens (mm)	Detect	Observe	Recognize	Identify
	2.8	43.4m/142.4 ft	17.4m/57.1ft	8.7m/28.5ft	4.3m/14.1ft
Video					
Compression		H.265+ / H.265 / H.264 / MJPEG			
H.264 code profile		Baseline profile, Main profile, High profile			
Frame Rate		Main Stream: 2MP (1920*1080), Max 30fps; 720P (1280*720), Max 30fps			
		Sub Stream: 720P (1280*720), Max 30fps; D1 (720*576), Max 30fps; 640*360, Max 30fps			
		Third Stream: D1 (720*576), Max 30fps; 640*360,Max 30fps; 2CIF(704*288), Max 30fps; CIF (352*288), Max 30fps			
Video Bit Rate		128 Kbps ~ 16 Mbps			
U-code		Supported			
On-Screen Display (OSD)		Up to 8 OSDs			
Privacy Mask		Up to 4 areas			
Region of Interest		Supported			
Video Stream		Triple			
Image					
White Balance		Auto / Outdoor / Fine Tune / Sodium Lamp / Locked / Auto2			
Digital Noise Reduction		2D/3D DNR			

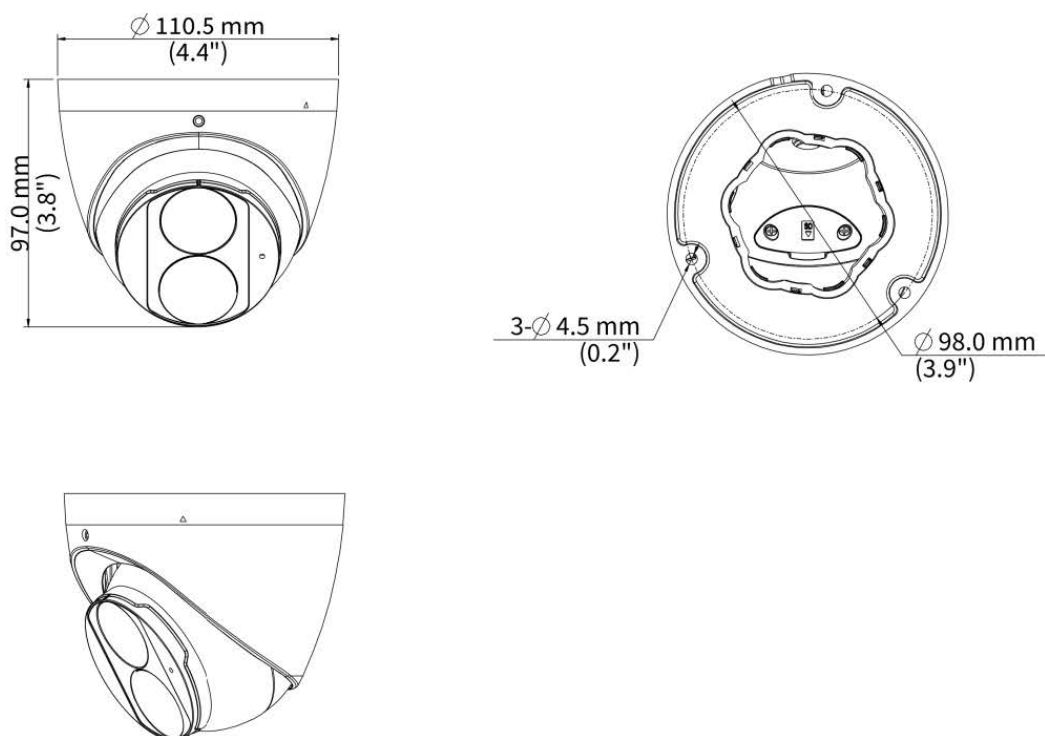
*Design and specifications are subjects to change without notice.

Smart IR	Supported
Flip	Normal / Flip Vertical / Flip Horizontal / 180° / 90° Clockwise / 90° Anti-Clockwise
Image Features	Highlight Compensation (HLC), Backlight Compensation (BLC), Digital defog
Events	
Basic Detection	Motion detection, Ultra motion detection, Tampering alarm, Audio detection
General Function	Watermark, IP Address Filtering, Access Policy, ARP Protection, RTSP Authentication, User Authentication, HTTP authentication
Smart Events	
Smart Intrusion Prevention	Cross line detection, intrusion detection, enter area detection, leave area detection (support false alarm filtering and the classification of human, non-motor vehicle and vehicle)
People Counting	Support people flow counting and crowd density monitoring
Audio	
Audio Compression	G.711U, G.711A
Audio Bit Rate	64 Kbps
Suppression	Supported
Sampling Rate	8KHZ
Storage	
Edge Storage	Micro SD, up to 512 GB
Network Storage	ANR, NAS (NFS)
Interface	
Built-in Mic	Yes
Ethernet	1 * RJ45 10M/100M Base-TX Ethernet
Network	
Protocols	IPv4, IPv6, IGMP, ICMP, ARP, TCP, UDP, DHCP, PPPoE, RTP, RTSP, RTCP, RTMP, DNS, DDNS, NTP, FTP, UPnP, HTTP, HTTPS, SMTP, 802.1x, SNMP, QoS, SSL/TLS, SSH
Compatibility	ONVIF (Profile S, Profile G, Profile T), API, SDK
User/Host	Up to 32 users. 3 user levels: administrator, common user and operator
Security	Password Protection, Strong Password, HTTPS Encryption, Export Operation Logs, Basic and Digest, Authentication for RTSP, Digest Authentication for HTTP, TLS 1.2, WSSE and Digest Authentication for ONVIF
Management software	LEGEND VMS, ARKIV
Web Browser	Plug-in required live view: IE 10 and above, Chrome 45 and above, Firefox 52 and above, Edge 79 and above
	Plug-in free live view: Chrome 57.0 and above, Firefox 58.0 and above, Edge 16 and above
Hardware	
Ethernet	1 × RJ45 10 M/100 M Base-TX Ethernet
Built-in Mic	Supported

*Design and specifications are subjects to change without notice.

Certifications	
EMC	CE-EMC (EN 55032, EN 61000-3-3, EN IEC 61000-3-2, EN 55035) FCC (FCC 47 CFR part15 B)
Safety	CE LVD (EN 62368-1) CB (IEC 62368-1) UL/CUL (UL 62368-1, CAN/CSA C22.2 No. 62368-1)
Environment	CE-RoHS (2011/65/EU;(EU)2015/863); WEEE (2012/19/EU)
Protection	IP67 (IEC 60529) 4KV (Surge protection)
General	
Power	DC 12V±25%, PoE (IEEE 802.3af)
Power Consumption	Less than 5.0W
Power Interface	Ø 5.5mm coaxial power plug
Dimensions (Ø x H)	Ø110.5 x 94.1mm (Ø4.4" x 3.7")
Weight	0.42 kg (0.93lb)
Material	Metal
Working Environnement	-30°C ~ 60°C (-22°F ~ 140°F), Humidity: ≤95% RH (non-condensing)

Dimensions

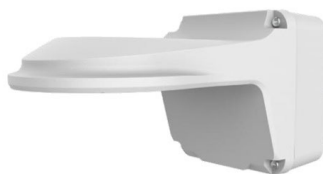


*Design and specifications are subjects to change without notice.

Accessories



XLGJB03-G
Junction Box



XLGJB07WM03-G
Wall Mount



XLGUP06
Pole Mount



XLGWM03-D
Wall Mount



XLGSE24
Pendant Mount



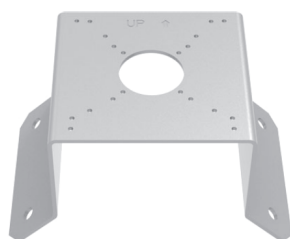
XLGCM24
Ceiling Mount



XLGSE24-A
Pendant Mount



VUSD256G
Micro SD Card

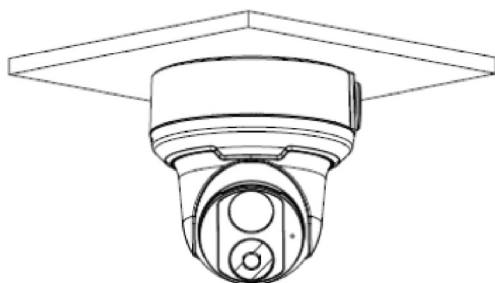


XLGUC08-C
Corner Mounting
Bracket

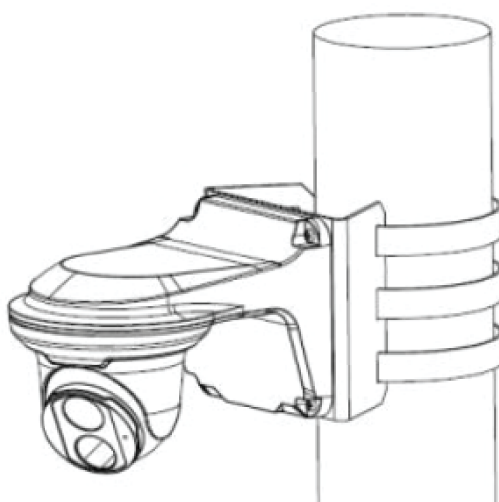
XLGUM06-D
Fixed Dome Indoor
Incline Mount



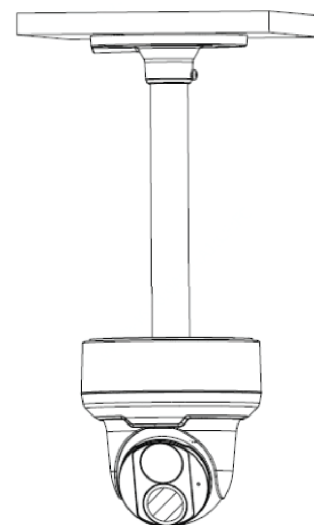
Accessories Mount



Junction Mount
XLGJB03-G



Pole Mount
XLGJB/WM03-G + XLGUP06



Ceiling Mount
XLGCM24 + XLGJB03

*Design and specifications are subjects to change without notice.